



Mariner V6-1

The Mariner

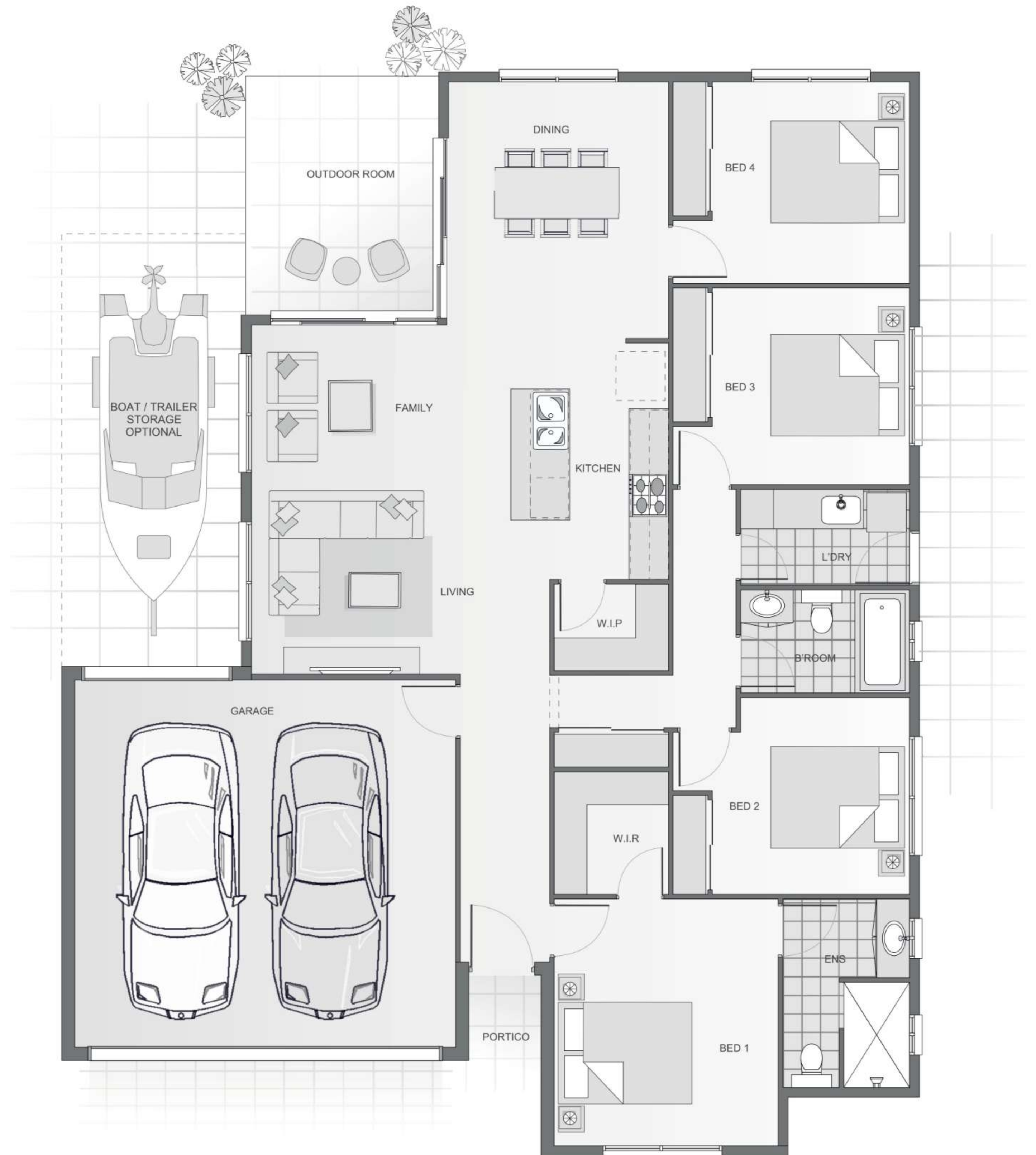


Spacious city living you'll love

- Perfectly designed for boat storage, this 4 bedroom features a central kitchen that overlooks dining, living, and outdoor room.
- BIG Island bench with breakfast bar or cocktail bar. Perfect for when friends come over.
- Entering through the front door, the house flows through the kitchen straight out to the outdoor room.
- Private bedrooms with central bathroom and laundry.
- Master bedroom designed at the front of the home with walk-in-robe, and deluxe ensuite.

All Ellis Developments homes feature:

- 2.7m ceilings
- 40mm stone breakfast bar bench tops
- Two types of termite protection
- Fujitsu Air
- Security Screens
- Roller Blinds
- Blanco kitchen appliances
- 3 step cornices in living
- Custom cabinets with soft close doors
- Full landscaping, digital irrigation, driveways and fencing



www.EllisDevelopments.com.au