



Monterey V5-2

# The Monterey

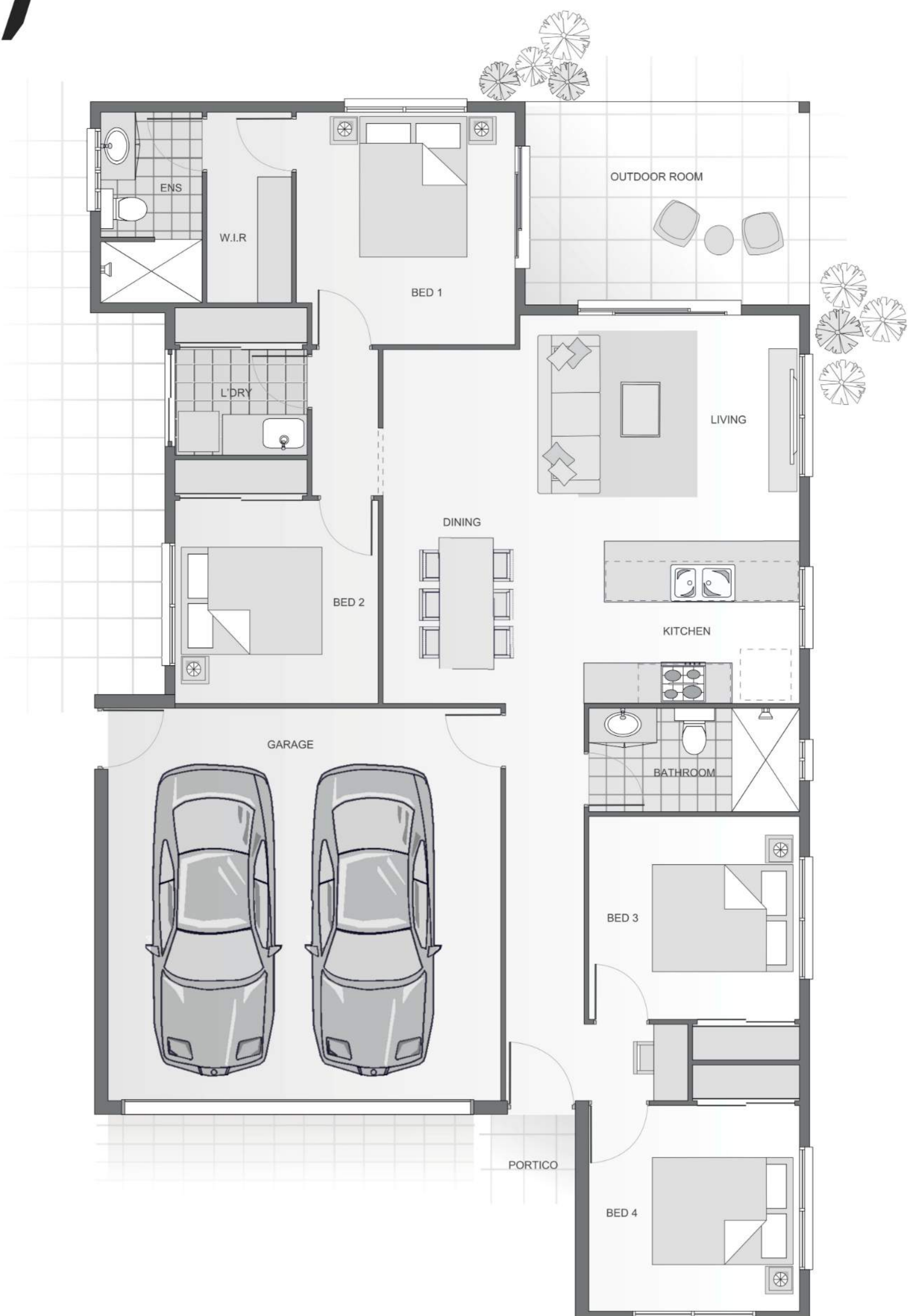
Your own slice of paradise



- 4-bedroom design that utilizes every bit of space.
- Perfectly positioned study nook separates bedrooms- ideal for home work.
- Internal laundry that leads straight outside to clothesline.
- Supreme Master bedroom with walk-in-robe, deluxe shower, and private sliding door to outdoor room.

**All Ellis Developments homes feature:**

- 2.7m ceilings
- 40mm stone breakfast bar bench tops
- Two types of termite protection
- Fujitsu Air
- Security Screens
- Roller Blinds
- Blanco kitchen appliances
- 3 step cornices in living
- Custom cabinets with soft close doors
- Full landscaping, digital irrigation, driveways and fencing



[www.EllisDevelopments.com.au](http://www.EllisDevelopments.com.au)