



Hawthorn V5

# The Hawthorn

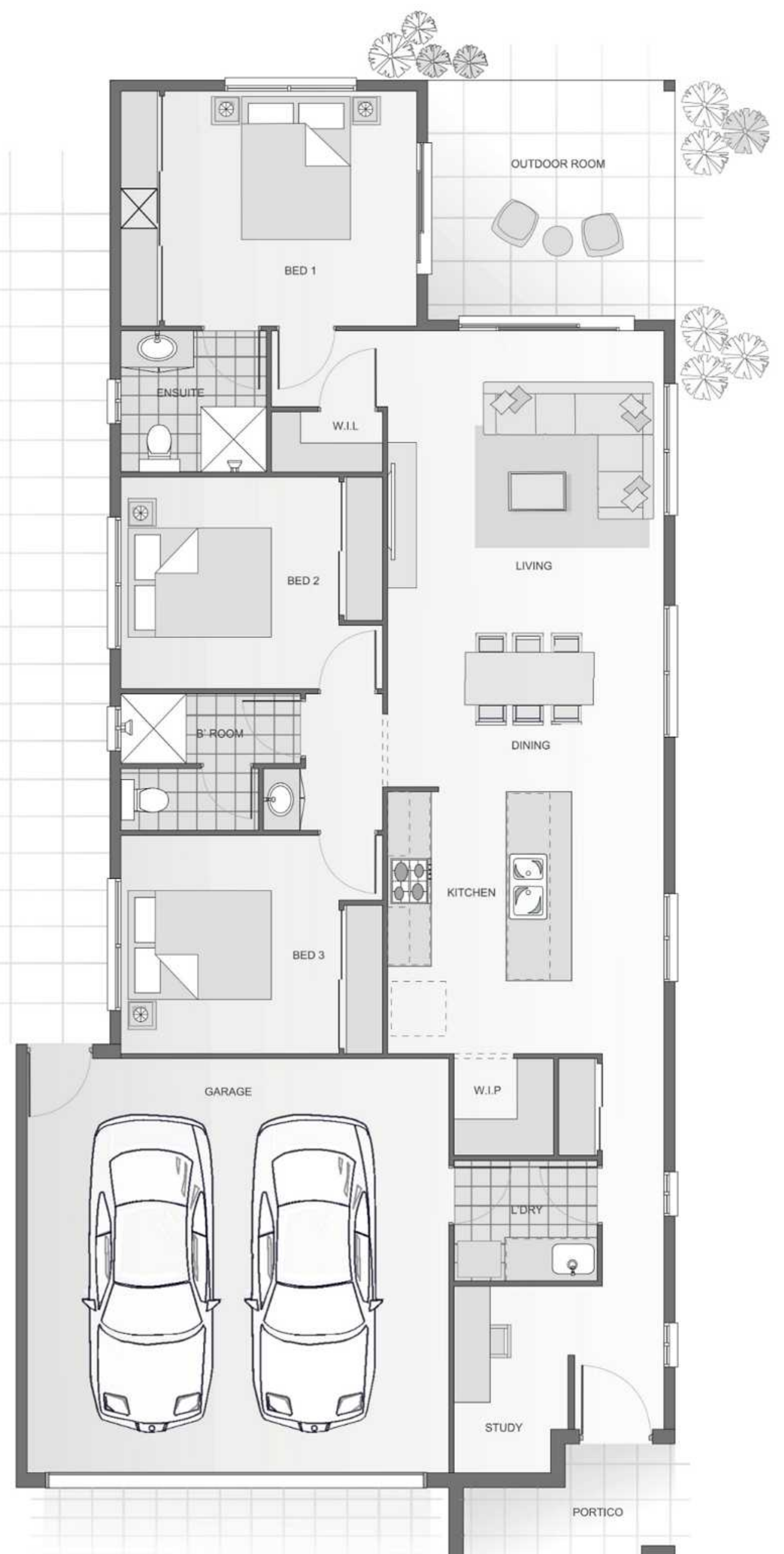
Perfect blend of form and function



- Great design offering 3 bedrooms with a central kitchen, dining and living areas.
- BIG Island bench with option for breakfast bar or cocktail bar.
- Entering through the front door, the house flows through the kitchen straight out to the outdoor room.
- Packed with design features including W.I.P, W.I.R, internal laundry, spacious study, 2 way bathroom and Walk-in-Linen.

All Ellis Developments homes feature:

- 2.7m ceilings
- 40mm stone breakfast bar bench tops
- Two types of termite protection
- Fujitsu Air
- Security Screens
- Roller Blinds
- Blanco kitchen appliances
- 3 step cornices in living
- Custom cabinets with soft close doors
- Full landscaping, digital irrigation, driveways and fencing



[www.EllisDevelopments.com.au](http://www.EllisDevelopments.com.au)