



Drives you further.

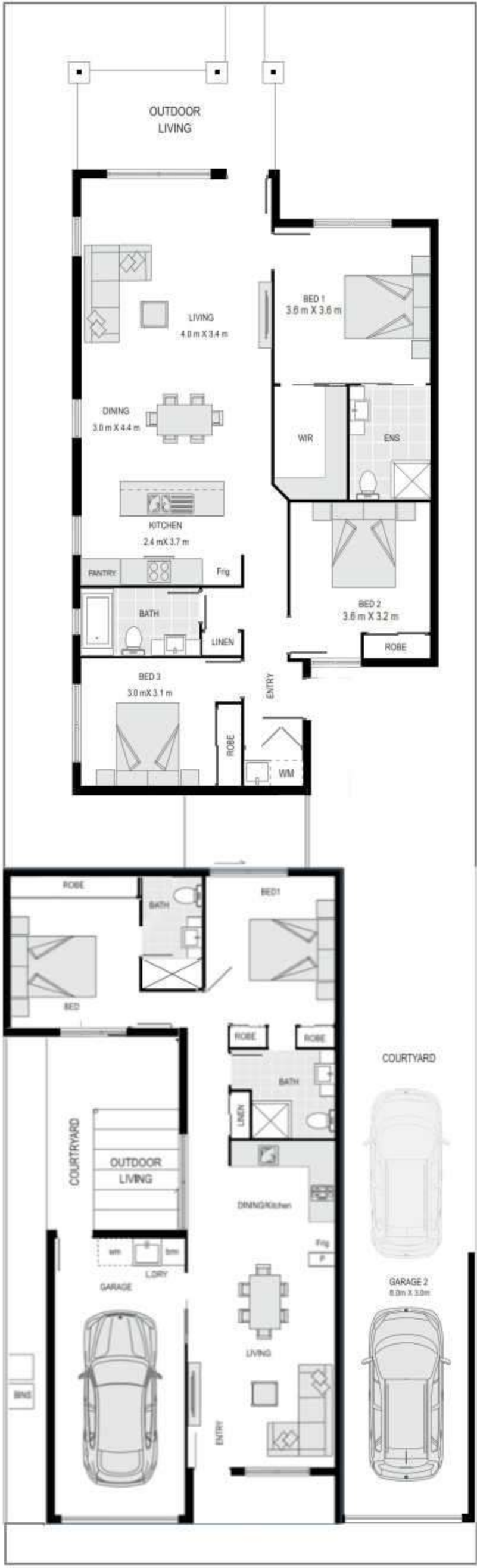


# The Hybrid



- Multiple options to satisfy all desires
- Every single inch of this property is providing you a yield
- In-line main Living area in primary residence
- Generous bedroom sizes with supremely laid out bathrooms
- Very spacious outdoor alfresco areas, with the main residence enjoying a tandem car park configuration
- Main residence with direct park views and access
- Separate apartment includes private Garage and Laundry

- No Body Corp to pay!
- 2.7m ceilings & 3-step cornice in Living
- 600mm x 600mm Rectified porcelain tiles
- Full split Air-con throughout and fans
- Luxury designer Kitchens - Soft Close everything, double thickness 40mm stone benchtop
- Designer-grade tapware throughout
- LED down-lights in Living
- USB charger, and NBN to house
- Stainless steel mesh security screens
- Ultra-modern façade using innovative materials for maximum street appeal and sustainability
- Custom cabinetry/study/vanities throughout
- 2 types of termite protection
- Full Turnkey - window blinds, landscaping, irrigation, clothesline, letterbox etc.



[www.HavenTownsville.com.au](http://www.HavenTownsville.com.au)

1300 455 557 • 50 HUGH ST, TOWNSVILLE

© The copyright of this drawing is vested in Ellis Developments QLD Pty Ltd and it may not be reproduced in whole or part or used for the manufacture of any article without the express permission of the Copyright holders. Artists impression are for illustrative purposes only.